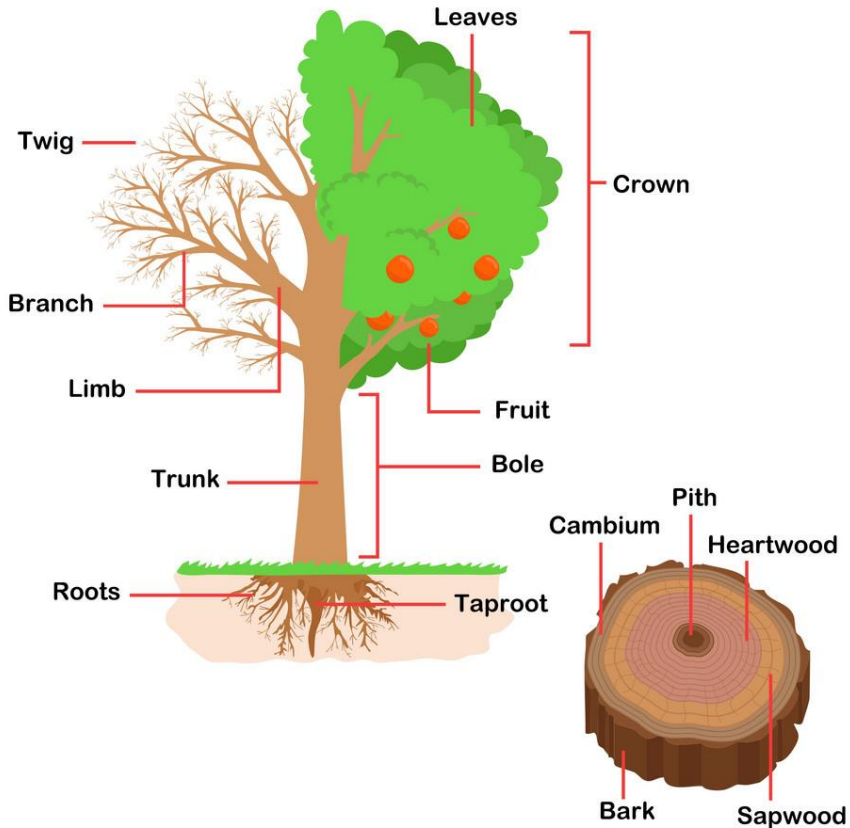


# Parts of tree



**Roots** -- Pull water and nutrients from the ground.

**Taproot** -- The main root of the tree that in some species can reach 60 or more feet deep to find groundwater.

**Trunk** -- The main stem of the tree that contains the structures that move water, nutrients, and glucose through the tree. Also called the "bole."

**Fruit** -- The part of the tree that contains seeds to plant new trees.

**Crown** -- The top part of the tree that includes the limbs, branches, twigs, leaves, and fruit.

**Leaves** -- Leaves collect sunlight and carbon dioxide from the air and contain chloroplasts, where the sunlight and carbon dioxide mix with water and nutrients collected by the roots and make glucose (sugar) to feed the tree. the process is called "photosynthesis."

**Limb** -- the parts of the tree that branch off from the main trunk.

**Branch** -- Branches shoot off of the larger limbs.

**Twig** -- Twigs are the tiny offshoots from branches and provide a support system for leaves