



**Mule Deer**



**Beaver**



**Great-horned Owl**



**Fox**



**Mouse**

**Animal cards.** Cut out these and place them horizontally in a line on your table or desk. You will cut out and shuffle the Animal Autographs cards, and place them face down in a pile. Draw them one at a time and place them under the animal you think might leave that "autograph."



**Raccoon**

**Scat the size and shape of raisins**



**Paw marks in the snow to find grass**



**A shed antler**



**Hoofprint**



**A dam of sticks and mud across a stream**



**Animal Autograph cards**

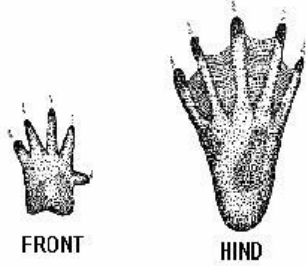
**A tree that has been chewed down**



**Scat that looks dry  
and woody**



**A print from a  
webbed foot**



**Scrape marks on  
small trees**



**Home of sticks and  
mud built on a pond**



**Big nest made of  
sticks**



**Animal Autograph cards**

**Pile of bird feathers**



**A single feather**



**Wing prints around a hole in the snow**



**White scat on a tree trunk**



**A grayish pellet on the ground under a tree**



**Scat with fruit and meat in it.**



**Animal Autograph cards**

**Footprints that are dog-like.**



**Burrow**



**Hole where animal  
dug for a mouse**



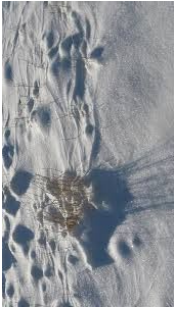
**Tiny footprints with  
a tail-dragging print**



**Tiny scat**



**Grass wiggling as if  
being chewed under  
the snow.**



**Animal Autograph cards**

**Tiny hole with tiny  
tracks leading to it.**



**Overtured garbage can in your neighborhood.**



**Something with a fluffy tail in a tree hole!**



**Something inside your bird feeder!**



**Scat with meat and berries and seeds in it. Maybe near water.**



**Tiny tracks ending at wing print.**



**Animal Autograph cards**

**Footprints that look like small hands.**





### **Mule Deer:**

- \*Shed antler
- \*Hoofprints
- \*Scat like raisins
- \*Paw marks to find grass
- \*Scrape marks on small trees

## **Cheat Sheet: Check your guesses!**



### **Beaver**

- \*Woody-looking scat
- \*Dam of sticks across a stream
- \*A tree that has been chewed down
- \*Home of mud and sticks built on a pond
- \*Print from a webbed foot



### **Fox**

- \*Dog-like footprint
- \*Pile of feathers
- \*Scat with berries & meat
- \*Hole in snow where it dove for a mouse



### **Mouse**

- \*Tiny scat
- \*Footprints with tail-drag
- \*Tiny hole with tiny tracks
- \*Grass wiggling from something eating it under the snow.
- \*Wing prints around a hole in the snow (mouse was eaten)



### **Raccoon**

- \*Footprints like small hands
- \*Upturned garbage can
- \*Something inside your bird feeder!
- \*Something with a fluffy tail in a tree hole!
- \*Scat with berries and meat, maybe near water



### **Great-horned owl**

- \*A grayish pellet
- \*White scat on a tree
- \*A single feather
- \*A wing print in the snow
- \*A big nest of sticks